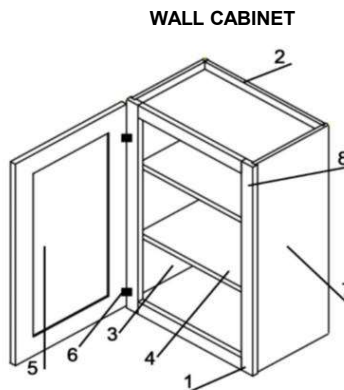
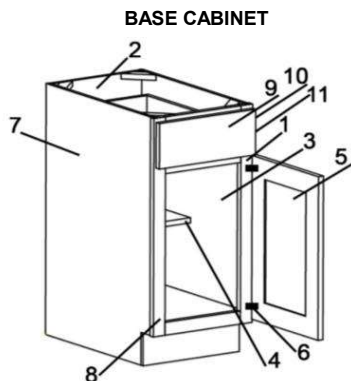


Midland Series

CABINET SPECIFICATIONS FOR MIDLAND



MIDLAND SERIES

1. 3/4" x 1 1/2" HARDWOOD FACE FRAMES WITH GLUED AND POCKET SCREWED JOINTS.
2. 3/8" PARTICLE BOARD BACK WITH MAPLE PRINT INTERIOR.
3. 3/8" PARTICLE BOARD SIDES, TOPS AND BOTTOMS, WITH MAPLE PRINT INTERIOR.
4. 5/8" PARTICLE BOARD SHELVING WITH A MAPLE PRINT ON BOTH SIDES AND ONE EDGE.
ALL SHELVES ARE ADJUSTABLE WITH BASE CABINETS HAVING 1/2" DEPTH SHELVES, SUPPORTED BY SHELF CLIPS.
5. HIGHLAND DOOR STYLE IS A 3/4" HDF ENGINEERED WOOD PANEL WITH SOFTENED EDGES.

PIONEER DOOR:

- A. STAINED DOOR IS A 3/16" ENGINEERED, VENEERED FLAT PANEL WITH 2 1/4" HARDWOOD STILES AND RAILS.
- B. PIONEER PAINTED DOORS WILL BE MADE WITH EITHER PAINT GRADE MAPLE STILES AND RAILS OR HDF STILES AND RAILS. CHECK WITH YOUR REP TO SEE WHAT IS OFFERED IN YOUR LOCATION FOR THIS DOOR.

6. ONE PIECE ADJUSTABLE HINGE.

DOOR UPGRADE OPTION:

1. ADJUSTABLE SOFTCLOSE HINGE

7. CABINET ENDS:

1. ENDS WILL BE CLOSELY MATCHING PRINT TO THE SELECTED FINISH COLOR.
CLOSELY MATCHING PRINT IS NOT AVAILABLE WITH GRAPHITE, NAVAL AND SLATE BLUE.
2. OPTIONAL ATTACHED FINISHED END SKINS MAY BE ADDED TO THE CABINET.

8. STANDARD FINISH CONSISTS OF NON WIPING STAIN, A COAT OF SELF SEALING CONVERSION VARNISH & A TOP COAT OF CONVERSION VARNISH. FINISH THICKNESS APPROXIMATELY 7 MIL. WET.

9. 3/4" HARDWOOD DRAWER FRONTS, PAINTED MAPLE WILL BE 3/4" HDF FRONTS.

10. SELF ADJUSTING EPOXY COATED 3/4 EXTENSION SIDE MOUNT DRAWER GUIDES.

TRACK UPGRADE OPTION:

1. UPGRADE TO A BLUM 7/8 EXTENSION UNDERMOUNT SOFT CLOSE TRACK (DOESN'T INCLUDE SOLID WOOD BOX)

11. DRAWER BOX - 1/2" RABBETED PLYWOOD DRAWER WITH 1/4" FLOOR, AND 3/4 EXTENSION SIDE MOUNT.

DRAWER UPGRADE OPTION:

1. 5/8" SOLID WOOD DRAWER BOX WITH BLUM 7/8 EXTENSION UNDERMOUNT SOFT CLOSE TRACK

**KCMA CERTIFIED
MEETS KCMA ESP STANDARD
C.A.R.B. PHASE II COMPLIANT**