

KOCH CLASSIC

Koch
CABINETS

because the kitchen is the heart of the home...

At Koch Cabinets, we take pride in our family-owned business roots since 1989, based in Seneca, Kansas. We understand the importance of your kitchen - it's where meals are shared, memories are made, and conversations flow.

Our commitment is to provide you with high-quality cabinets that not only reflect your style, but also stand the test of time. Whether your taste leans towards traditional, contemporary, or somewhere in between, we have a wide range of options to suit your needs.

Thank you for choosing Koch Cabinets to be a part of your home. We look forward to helping you create a kitchen that's both functional and beautiful, where moments are cherished for years to come.

- Jim Koch, President





Discover what sets us apart at Koch Cabinets. Founded by brothers, Jim and Dan, and uncle Fred Koch, our flexibility, quality, and value make us an exceptional choice for your cabinetry needs. However, it's our commitment to family values that truly distinguish us.

At Koch Cabinets, you're more than just a customer; you're family. We pride ourselves on using American-sourced materials and employing a labor force renowned for its Midwest work ethic. Our identity as a family-owned company sets us apart. We live this commitment every day, ensuring your experience with us is truly special.



Perimeter: Augustal5, Birch, Frontier/Island: Augustal5, Maple, Black





Prairie, Paint Grade, White

About our Classic line.

Introducing our Classic Series: a versatile semi-custom line meticulously crafted to elevate your design aspirations. With an extensive array of over ninety customizable features, you have the freedom to tailor your cabinetry precisely to your vision. From an assortment of door styles to an exquisite palette of stains and paints, our collection offers the perfect blend of sophistication and functionality for every space in your home.

At Koch Cabinets, we pride ourselves on sourcing only the highest quality materials, ensuring durability and timeless elegance. With an unwavering commitment to excellence, we prioritize delivering superior cabinetry that embodies both luxury and affordability, making your dream interiors a tangible reality.



Prairie, Paint Grade, White



Perimeter: Savannah15 Shaker, Paint Grade, Ivory/Island: Charcoal Blue

Door styles.

Explore our extensive array of styles, designed to transport you seamlessly from Country to Traditional, Rustic to Contemporary, Transitional to Craftsman. Whether you're seeking to reflect your personality or enhance any decorating scheme, our diverse selection ensures the perfect match for your home. Elevate your space and add an extra layer of charm and detail by selecting from our seven available finishing techniques to accessorize your doors. Discover how our cabinets not only complement your style but also add significant value to your home.



ASPEN15
Birch, Chestnut



AUGUSTA15
PG, Foxhall Green



BEDFORD
Rift White Oak, Russet



BRISTOL
Beech, Sienna



CENTENNIAL15
Knotty Alder, Pecan



CHARLESTON15
PG, Ivory



EASTON
Rustic Beech, Briarwood



FAIRWAY
Cherry, Mocha



FRANKLIN
PG, Charcoal Blue



HASTINGS15
Maple, Almond



LIBERTY
Birch, Pecan



MADISON15
Rustic Birch, Frontier



NORFOLK15
Beech, Natural



ORLEANS
PG, Capri



PLATEAU
PG, Frost



PRAIRIE
Birch, Driftwood



REGENCY
Birch, Taupe



RIDGEGATE
Birch, Smoky Blue



SAVANNAH15
White Oak, Briarwood



SENECA
Birch, Stone



SUMMERHILL
PG, Dusk



VICKSBURG
Distress Rustic Cherry, Natural

Wood species.

Experience the natural beauty of wood in every detail with our meticulous approach to craftsmanship. At Koch Cabinets, we select only the finest solid wood and wood veneers to showcase the rich grains and unique characteristics of each species in our doors.

To preserve and enhance this natural beauty, we employ a multi-step finishing process that includes hand sanding, precise application techniques, and curing in baking ovens. This attention to detail ensures that your cabinets not only look stunning but also stand the test of time, adding warmth and elegance to your home for years to come.



BEECH



RUSTIC
BEECH



BIRCH



RUSTIC
BIRCH



CHERRY



RUSTIC
CHERRY



HICKORY



RUSTIC
HICKORY



KNOTTY
ALDER



MAPLE



WHITE OAK



RIFT
WHITE OAK



Perimeter: Savannah15, Paint Grade, Ivory/Customer Supplied Island

DYE STAINS

For a professional finish on your two-tone woods, choose our Dye Stains. Dark and rich in color, they ensure even coats, enhancing the natural beauty of your woodwork.



PLATEAU
HICKORY
CHESTNUT



VICKSBURG
RUSTIC BEECH
FRONTIER



BEDFORD
BIRCH
MOCHA

WIPING STAINS

Our wiping stain is expertly applied via spray, then meticulously hand wiped for uniform coverage across the wood surface, ensuring the stain will bring out the natural beauty and characteristics of the wood.



CHARLESTON15
KNOTTY ALDER
PECAN



LIBERTY
RIFT WHITE OAK
BROWN SEPIA



MADISON15
HICKORY
SIENNA



PLATEAU
WHITE OAK
RUSSET

NATURAL & UNFINISHED

The majority of wood species come in both Natural and Unfinished options to cater to your preferences and project needs.



SAVANNAH15
HICKORY
NATURAL



EASTON
BIRCH
UNFINISHED



PRAIRIE
KNOTTY ALDER
NATURAL



CHARLESTON15
CHERRY
UNFINISHED

ANTIQUE STAIN

Our antique stain combines paint and stain to impart a weathered, rustic appearance to your woodwork, adding timeless charm to your project.



EASTON
BIRCH
WHITE DRIFT



NORFOLK15
BIRCH
CAPRI DRIFT



FAIRWAY
RUSTIC BEECH
FOG DRIFT



SENECA
BIRCH
DUSK DRIFT

Finishes.



SAVANNAH15
PG SMOKY BLUE



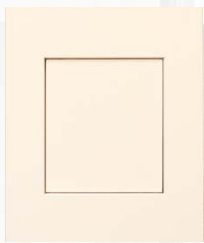
BEDFORD
PG OYSTER



PRAIRIE
PG BLACK



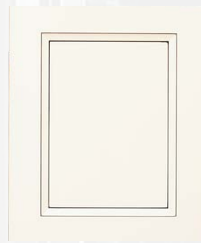
SUMMERHILL
PG FOG



ASPEN15
PG IVORY
UMBER HIGHLIGHT



EASTON
PG WHITE
SMOKE HIGHLIGHT



BRISTOL
PG FROST
EBONY HIGHLIGHT



RIDGEGATE
BIRCH, BRIARWOOD
PENCIL GLAZE



SAVANNAH15
BEECH, DRIFTWOOD
BLACK ACCENT



BRISTOL
MAPLE, SIENNA
CHOCOLATE ACCENT

PAINTS

Experience the smoothness and durability of our tinted conversion varnish paints, making them an exceptional option for kitchens or as standout accent pieces in any space.

HIGHLIGHTS (FOR PAINTS ONLY)

Highlights are achieved by using a flow pen instrument to delicately apply color to the intricate details of profiled areas on painted cabinets, adding depth and character to your cabinetry.

PENCIL GLAZE

To achieve Pencil Glaze, we utilize a precise flow pen instrument to delicately apply glaze to the intricate details in profiled areas, enhancing the beauty and depth of your surfaces.

ACCENT GLAZE

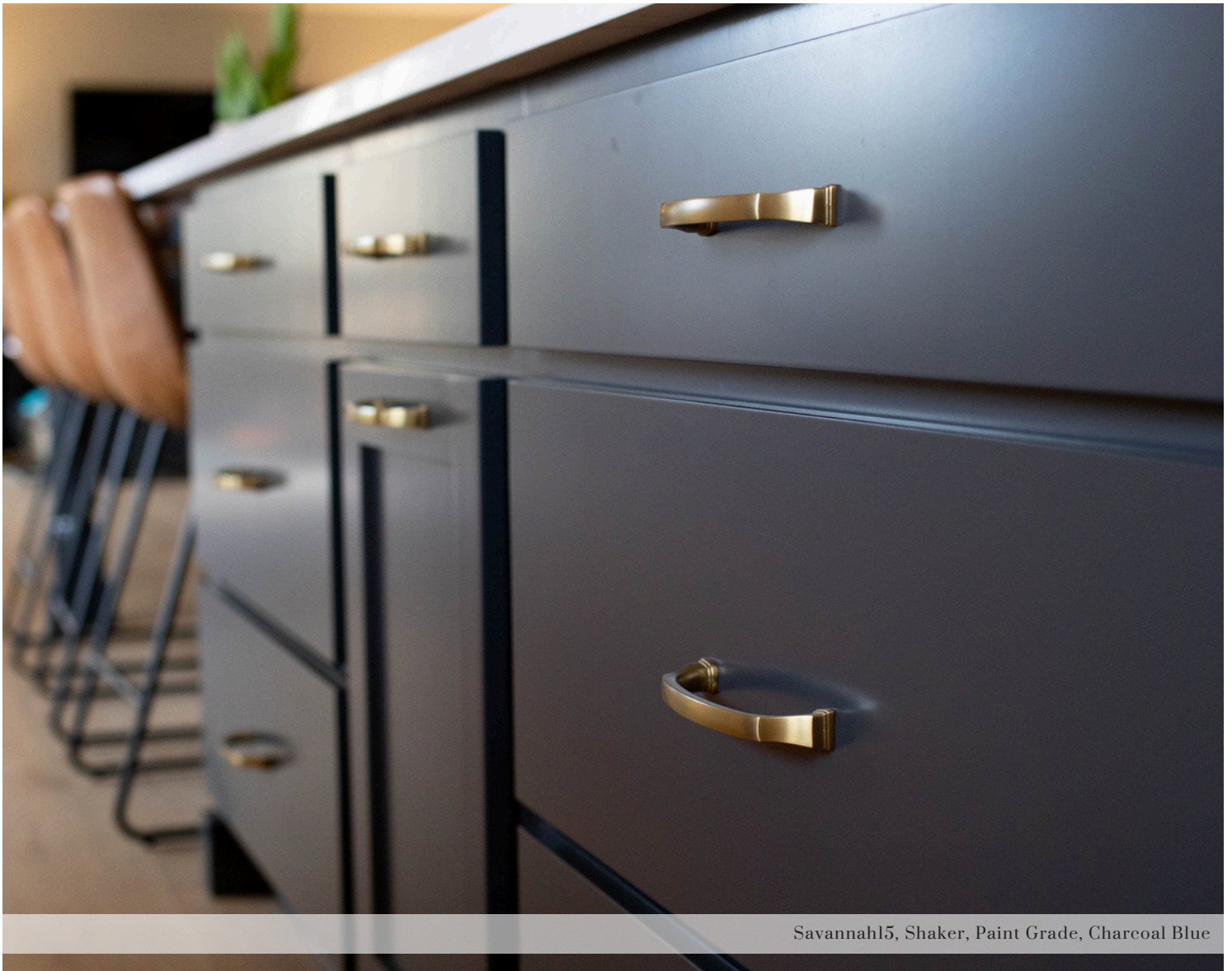
Our Accent Glaze, meticulously hand-applied, imbues each door with its own unique personality. The intricacy of the molding dictates the level of definition, ensuring a distinct and captivating finish.



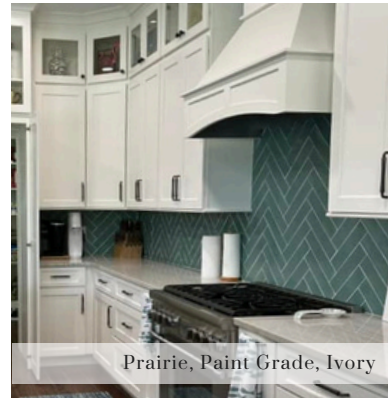
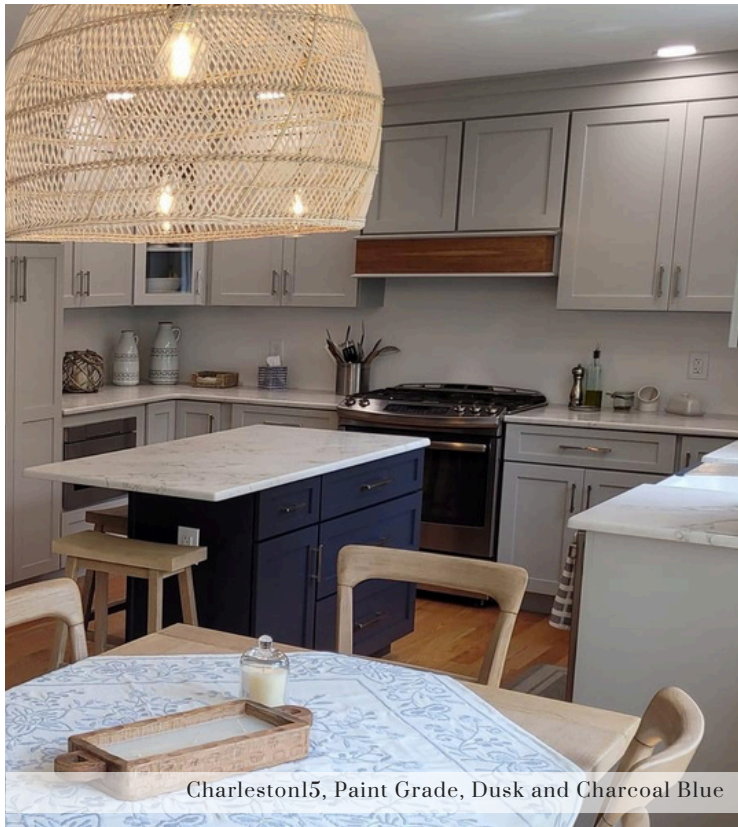
Augusta15, Birch, Frontier



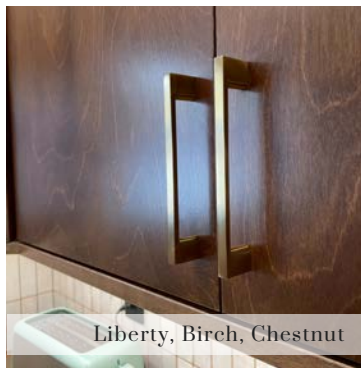
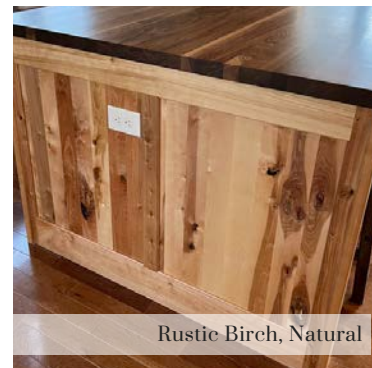
Savannah15, Paint Grade, Capri



Savannah15, Shaker, Paint Grade, Charcoal Blue



Koch
CABINETS





Bristol, Paint Grade, White and Charcoal Blue



Island: Fairway, Paint Grade, Fog

ELEVATE YOUR SPACE WITH QUALITY CRAFTSMANSHIP

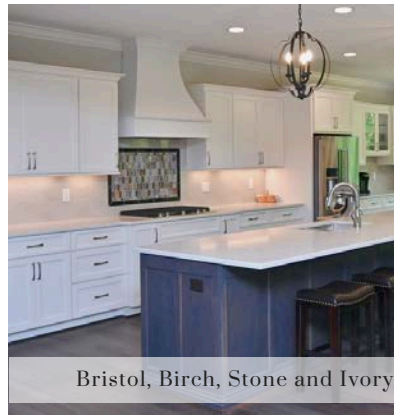
At Koch Cabinets, we take pride in our reputation for quality craftsmanship, dedication to service, and commitment to providing cabinetry that embodies both beauty and strength. Our skilled artisans meticulously attend to every detail, from the selection of high-quality woods and veneers to professional finishing touches. The result is cabinetry that is built like fine furniture, blending timeless elegance with enduring durability. Experience the difference of American-made cabinetry that makes a lasting impression.



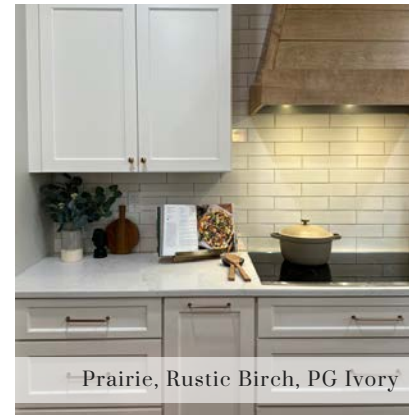
Fairway, Paint Grade, White



Charleston15, Paint Grade, Dusk



Bristol, Birch, Stone and Ivory



Prairie, Rustic Birch, PG Ivory



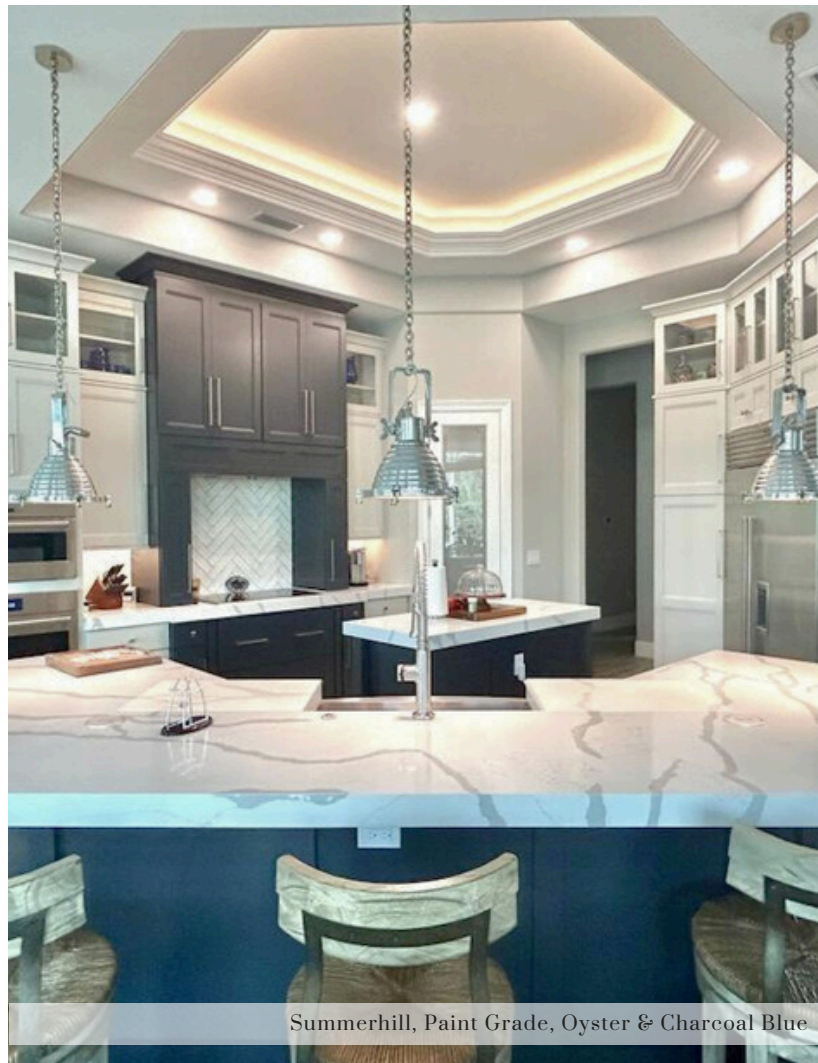
Easton, Cherry, Briarwood



Prairie, Rustic Birch, Pecan



Savannah15, Paint Grade, White & Black



Summerhill, Paint Grade, Oyster & Charcoal Blue



Crafting Quality, Building Tradition:
A Family-Owned Cabinet Manufacturer,
Proudly Offering American Made
Excellence for over 35 years.



Perimeter: Savannah15, Paint Grade, Fog/Island: Savannah15, Paint Grade, Smoky Blue



Perimeter: Bristol Shaker, Paint Grade, Dusk/Island: Paint Grade, Black

KOCH CLASSIC

<https://kochandco.com>

SCAN ME
FOR MORE
INFO!



Actual finishes and variations in wood species may differ from photography shown. See your dealer for product samples.