

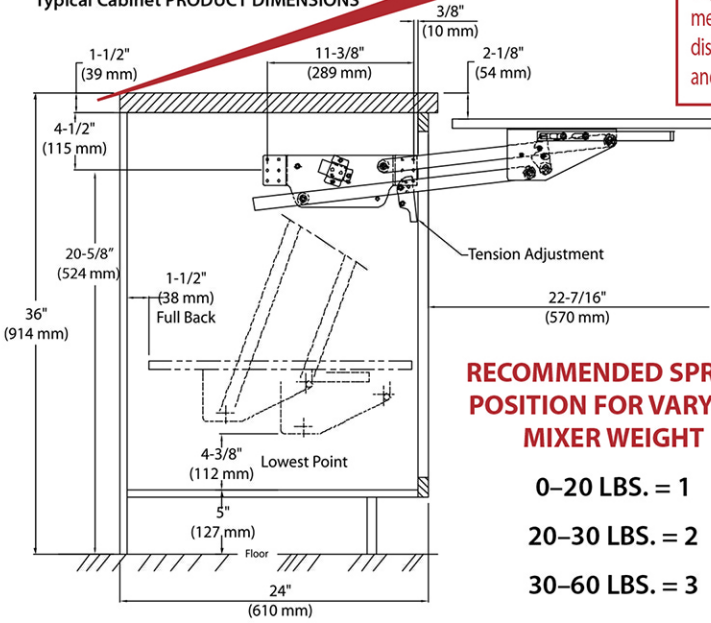
RAS-ML-HDCR SERIES

HEAVY-DUTY MIXER LIFT

With design flexibility in mind, the heavy-duty chrome mixer lift can be attached to any custom made shelf and fits all cabinet sizes. Revered as the "best in the industry", the RAS-ML-HDCR provides mechanical assist and features built-in shock dampeners, adjustable spring tension and holds appliances up to 60 lbs.

NOTE: The dimensions listed provide clearance for an item 15¹⁵/₁₆" H x 14¹⁵/₁₆" D placed at the front edge of the shelf. Depending on your cabinet construction and your specific height and depth requirements, the 4¹/₂" dimension from the top of the cabinet to the middle of the lifting mechanism can be reduced to allow the platform to be closer to counter height, thus a greater distance below the unit in the closed position. It can also be increased to allow for items taller and deeper than the dimensions provided.

Typical Cabinet PRODUCT DIMENSIONS

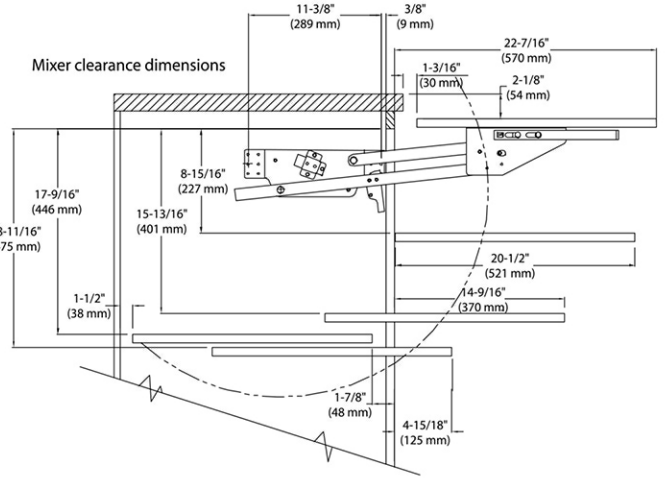


RECOMMENDED SPRING POSITION FOR VARYING MIXER WEIGHT

0-20 LBS. = 1

20-30 LBS. = 2

30-60 LBS. = 3



To determine shelf size measure the distance between mounting plates when installed minus 1¹/₄".
Recommended length of shelf is 20¹/₂".
Mounting plates are 1" wide.



GREAT FOR A VARIETY OF SMALL APPLIANCES!

PRODUCT #s DESCRIPTION

Heavy-Duty Mixer Lift

RAS-ML-HDCR

Heavy Duty Mixer Lift

PRODUCT DIMENSIONS

See Illustrations Next page

FINISH

Silver Powder Coat

NOTE: Needs to be installed in full height base cabinet. Provides mechanical assistance.

CONTAINS: Right and Left Lifting arms, Hardware. **SHELF NOT INCLUDED.**